

A state-of-the-art

FACILITY



BRIGADE
TechPark

WHITEFIELD, next to ITPL



Software Facilities

BPOs

Biotech Enterprises

Corporate Offices

A spacious, well designed office facility

Built to international standards, using post-tension construction technology. Brigade TechPark covers over 444,400 sft of built-up area. And offers a range of comprehensive features and facilities. This spacious technology park is spread across two buildings, strategically located next to ITPL and the Export Processing Zone. A state-of-the-art building, Brigade TechPark offers a well planned and sensitive working environment, equipped to suit a range of business needs.



What makes Brigade TechPark ideally suited to your organisation's needs?

- Choice of floor plans range from 13,000 sft–24,000 sft and 32,000 sft–50,500 sft
- Flat-slab construction
- Efficient column grid span of 10.5 mtrs x 11.5 mtrs to facilitate better interiors and utilisation of floor area
- Floor to ceiling clear height: 3.75 mtrs (12'6") (below the capital)
- 100% Generator back-up power
- Centrally air-conditioned
- Ample multi-level car and two-wheeler parking
- Swimming pool
- Gym
- Earmarked areas for cafeteria and coffee shop



SWIMMING POOL SHOT ON LOCATION





Whitefield: A strategic location

Ranked next only to Tokyo and London for office space absorption*, Bangalore has become a buzzword for growth, technology and global significance. The world's leading organisations have an expanding presence in the city. Many less known ones are making their presence felt within it everyday. Whitefield is one of the city's major technology hubs, growing in status as a satellite city. A prized location for multinational offices and upcoming integrated townships, the region also has a mushrooming retail sector with several shopping malls and star hotels.

All this makes Brigade TechPark excellent value for money. It is situated right next to the Information Technology Park (ITPL) and Export Processing Zone. Other proposed developments in the vicinity include a number of residential projects and a convention centre. The Bangalore airport is just a 20-minute drive away.

It's an address that makes good business sense.

* Based on a survey conducted by London listed international real estate consultancy firm, DTZ, in 2005.

BLOCK A

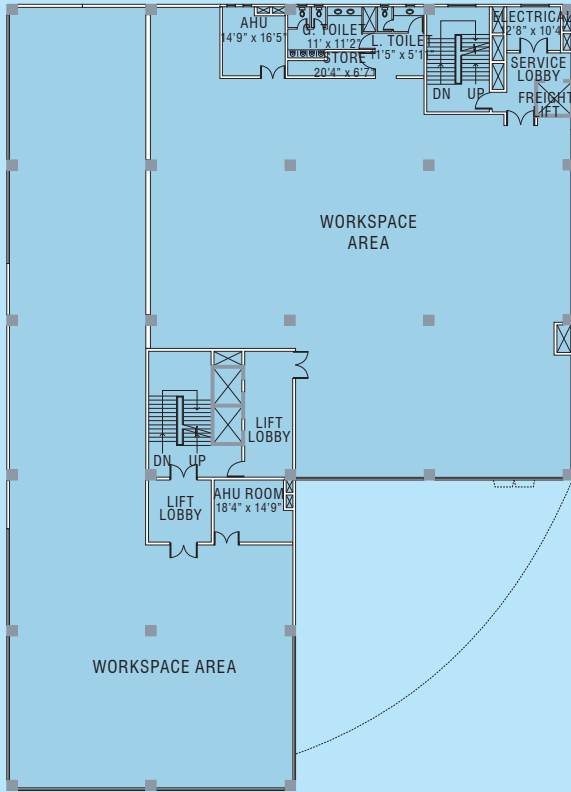


BLOCK B



Over 444,400 sft | Architectural expertise of international software parks | Excellent value for money

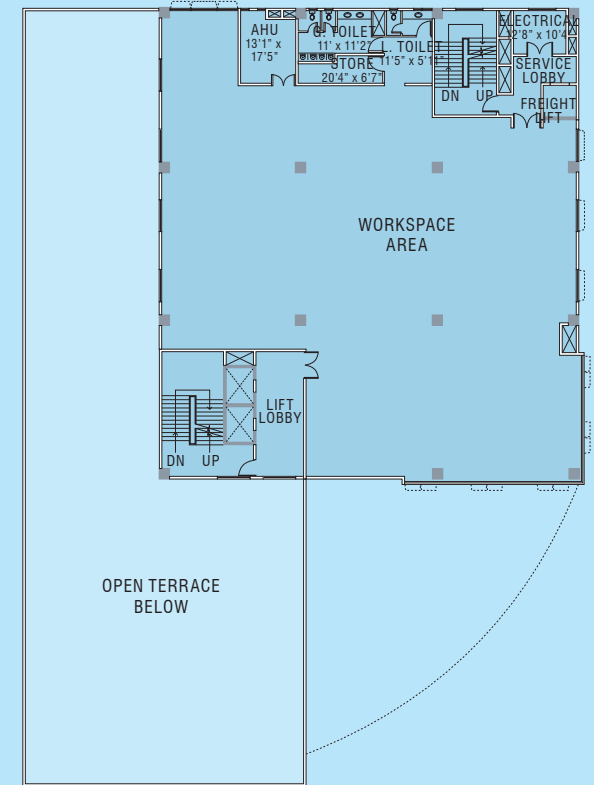
Areas on super-built basis. Super-built area includes area of walls, balconies & proportionate area of staircase, lift, common passage and common facilities. E & OE.



First and Second Floors

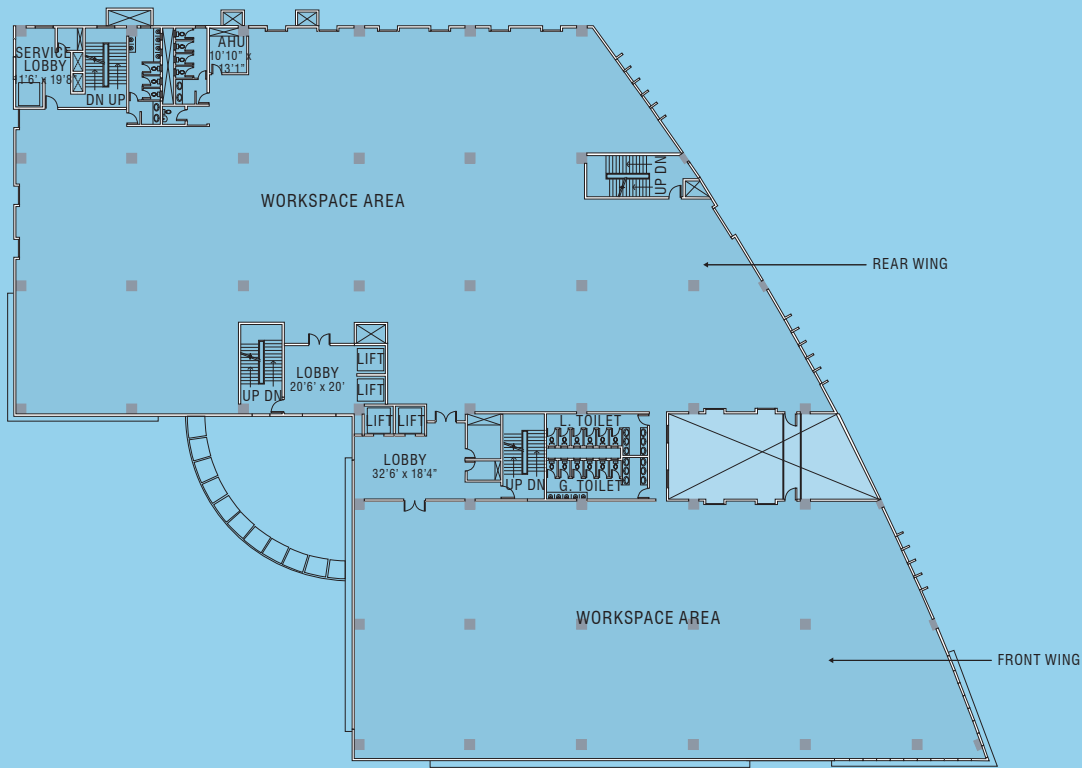
Floor	sft*
First	24,800
Second	24,800
Third	13,200
Fourth	13,200
Fifth	13,200
Sixth	13,200
Seventh	13,200
Eighth	13,200
Ninth	13,200
Total	142,000

Basement for parking and services



Third to Ninth Floors

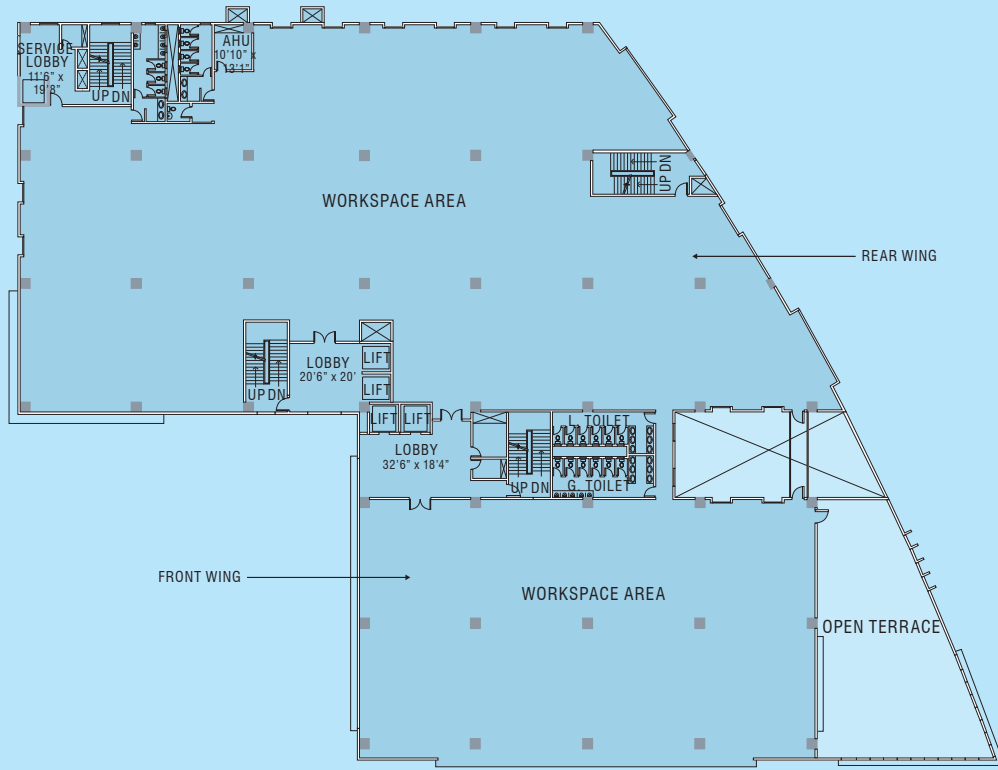
*1sft = 0.093sqm



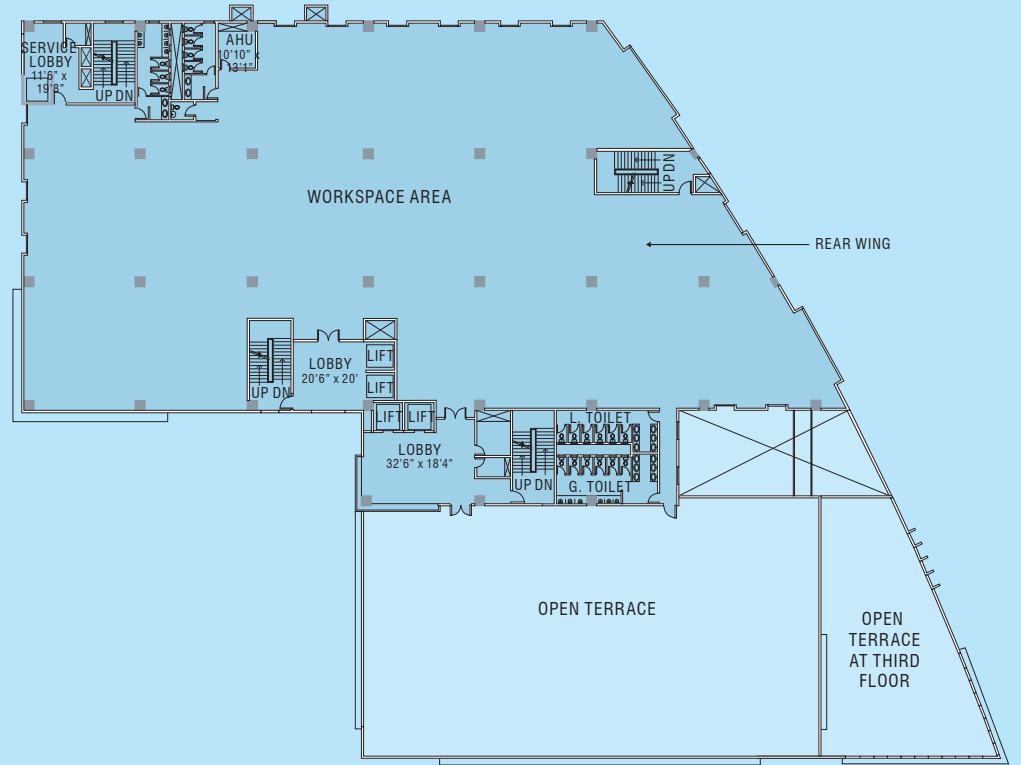
First and Second Floors

Floor	Area (sft*)		
	Front Wing	Rear Wing	Total
First	18,500	32,000	50,500
Second	18,500	32,000	50,500
Third	14,600	32,400	47,000
Fourth	14,600	32,400	47,000
Fifth		32,300	32,300
Sixth		32,500	32,500
Seventh		13,900	13,900
Eighth		14,500	14,500
Ninth		14,200	14,200
Total			302,400

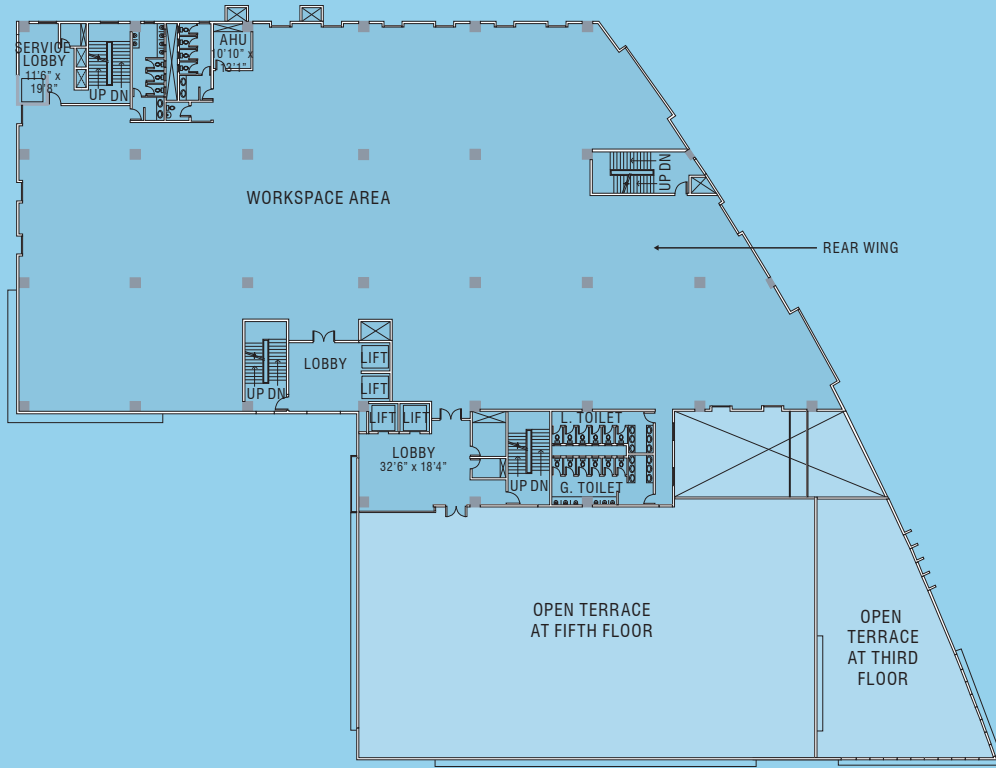
Basement for parking and services
 *1sft = 0.093sqm



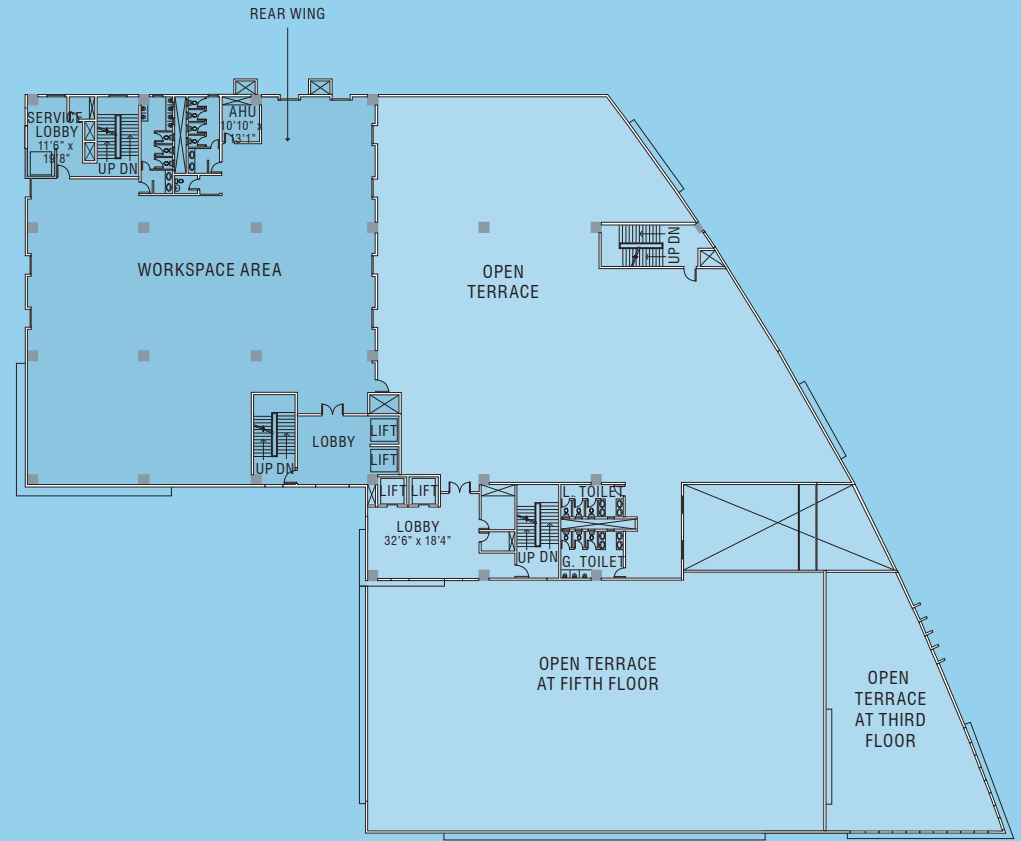
Third and Fourth Floors



Fifth Floor



Sixth Floor



Seventh Floor



*For a better quality of life,
upgrade to Brigade*

Established in 1986, Brigade Group is one of Bangalore's leading property developers. It was also amongst the first in the industry to get the coveted ISO 9001-2000 certification; an indication of its commitment to meeting, and then excelling, quality benchmarks.

In 19 years of operations, Brigade Group has over 70 projects to its credit, in Bangalore and Mysore. With over 20 million sft completed and under various stages of completion, Brigade Group's projects include luxury apartment complexes, integrated enclaves, state-of-the-art software and retail facilities, serviced apartments, retirement residences, resorts, hotels, clubs, schools and vocational training institutions.

Brigade Group's corporate vision has evolved with time and organisational growth. Its vision and intent now encompass not just building better homes and offices, but also providing a better quality of life for those who occupy them.

Apartments | Integrated Enclaves | Offices & Software Facilities

Malls | Education | Serviced Apts & Corporate Residences

Retirement Residences | Clubs | Resorts | Hotels

OUR OTHER SOFTWARE & COMMERCIAL PROJECTS IN:

Whitefield | Malleswaram-Rajajinagar | Mysore

Our Corporate / Software Clients include

Alopa Networks • CISCO Systems • Cognizant Technologies • Dewan Housing Corporation
DigiCaptions • Discount & Finance House of India • EMC² • Ernst & Young • Essilor
GE Consumer Products • Hewlett Packard • ICICI Infotech • Intel • John Crane Sealol
Lotus Labs • Macmillan • MetLife Insurance • MindTree Consulting • New India Assurance
Co. • Nokia • nVIDIA Corporation • Quintiles • RCI • Repool India • Satyam Computers
Securities Trading Corporation of India • Speedera Networks • Spice Communications
Tavant Technologies • Trianz Consulting



Brigade Group, Brigade Towers
Brigade Road, Bangalore 560 025, India
Ph: +91-80-4137 9200 Fax: +91-80-2221 0784
enquiry@brigadegroup.com www.brigadegroup.com
An ISO 9001-2000 Property Developer