

# 3-Bedroom Apt Floor Plans

1590 SFT – 1720 SFT

FOR WINGS C TO M

TO HELP YOU SELECT YOUR APARTMENT

1590 SFT ONWARDS



BRIGADE  
GATEWAY

The Lifestyle Enclave

# Site Plan



**Note:** For a larger site plan and for more information on the project, please refer to the Gateway Poster Brochure.

# Key Plan of the Residential Section



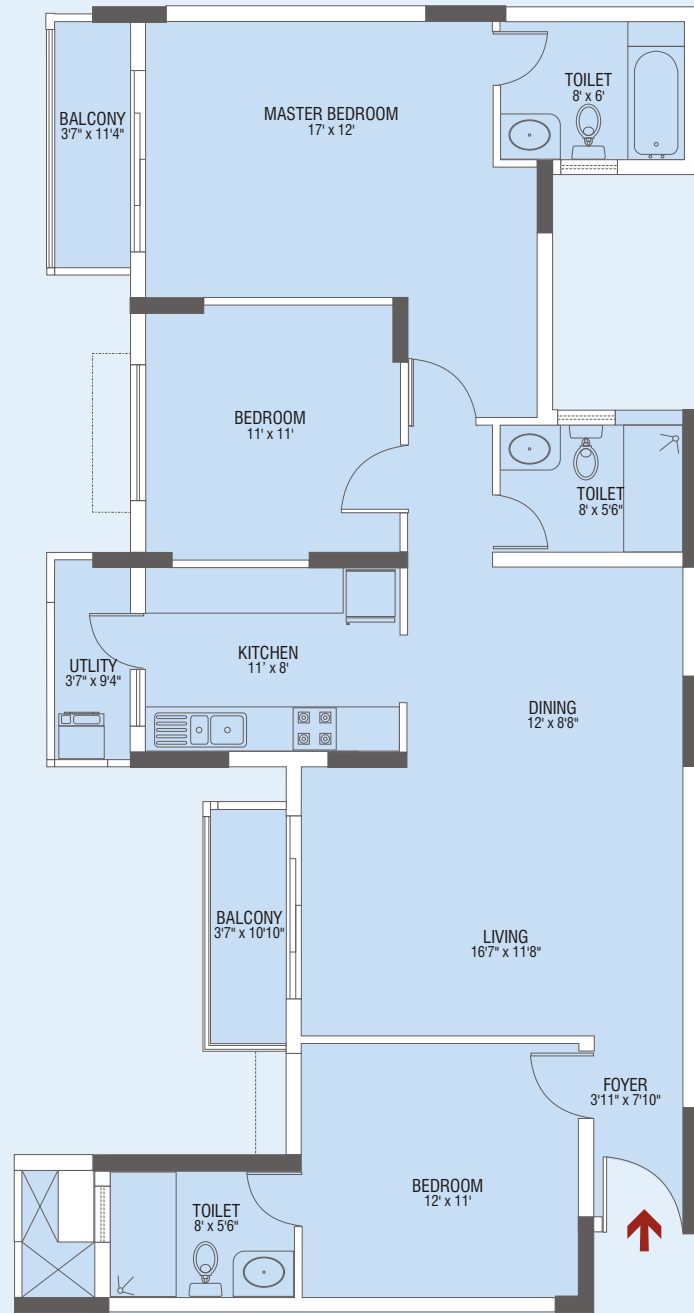
On offer: C, D, E, F, G, H, I, J, K, L and M Wings

Apartment Wings		
<b>A</b> Andromeda	<b>B</b> Altair	<b>C</b> Corona
<b>D</b> Cygnus	<b>E</b> Leo	<b>F</b> Gemini
<b>G</b> Pegasus	<b>H</b> Phoenix	<b>I</b> Hercules
<b>J</b> Polaris	<b>K</b> Sirius	<b>L</b> Vega
<b>M</b> Lynx		

Areas on super-built basis. Super-built area includes area of walls, balconies & proportionate area of staircase, lift, common passage and common facilities. The information contained herein is subject to change as may be required by the authorities and cannot form part of any offer or contract. E & OE.

**Note :** Only 3-bedroom apts are identified with numbers in this key plan.

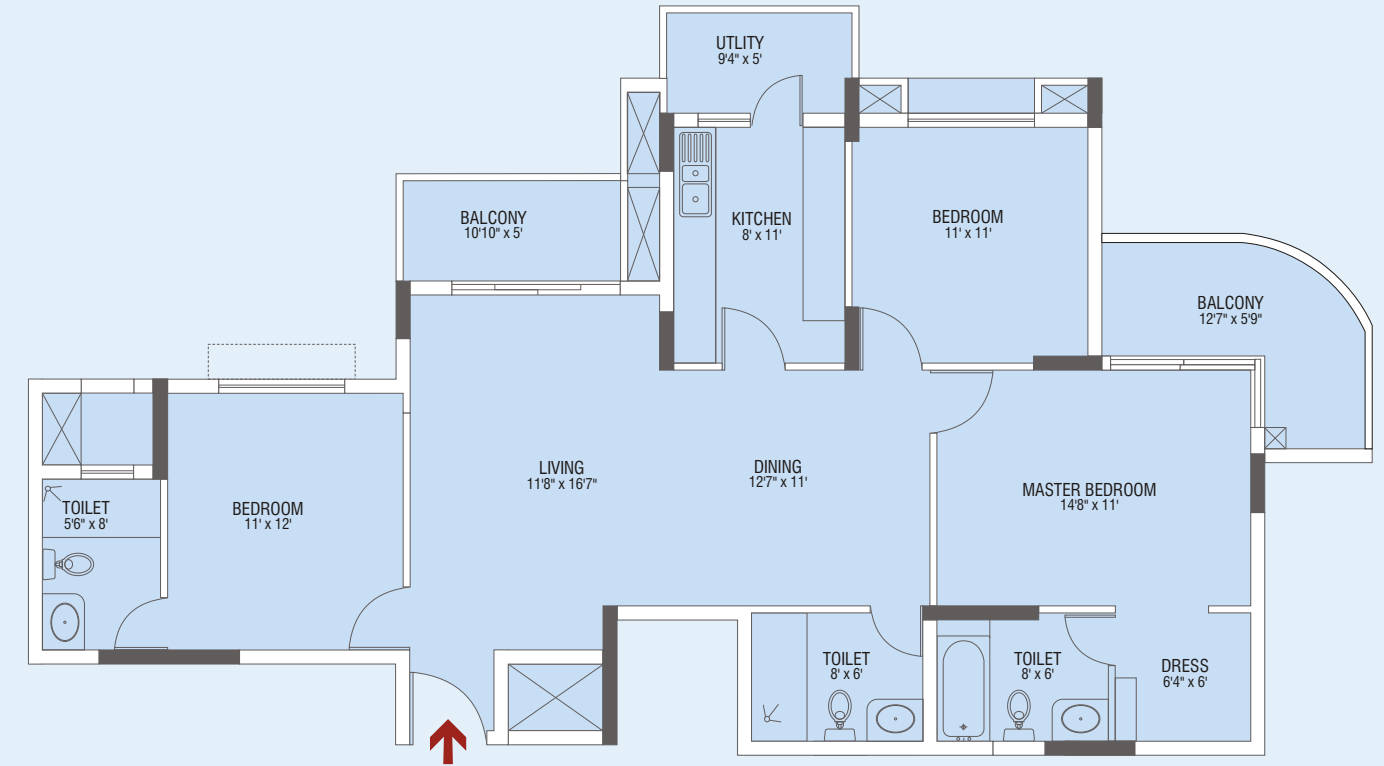
# 3-Bedroom 1590 sft



LOCATIONS OF THE 3-BEDROOM 1590 SFT APTS

Wing	Floor	Apts No. in key plan
C	1 <sup>st</sup>	6,7
H	1 <sup>st</sup>	1,2,7,8
I	1 <sup>st</sup>	1,2,7,8
L	1 <sup>st</sup>	1,2,7,8
M	1 <sup>st</sup>	1,2,7,8

# 3-Bedroom 1640 sft (TYPE B)



LOCATIONS OF THE 3-BEDROOM 1640 SFT (TYPE B) APTS

Wing	Floor	Apts No. in key plan
C	2 <sup>nd</sup> to 16 <sup>th</sup>	5

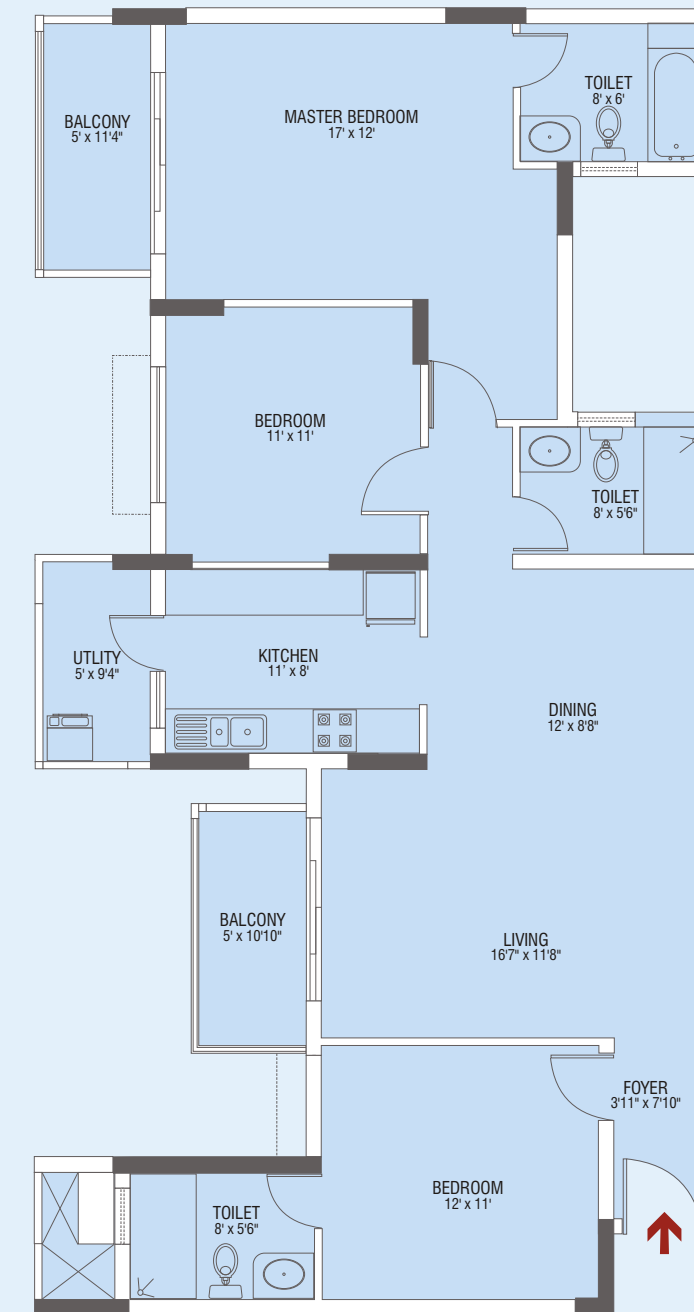
# 3-Bedroom 1640 sft (TYPE B3)



LOCATIONS OF THE 3-BEDROOM 1640 SFT (TYPE B3) APTS

Wing	Floor	Apts No. in key plan
C	2 <sup>nd</sup> to 4 <sup>th</sup>	3
	9 <sup>th</sup> to 15 <sup>th</sup>	

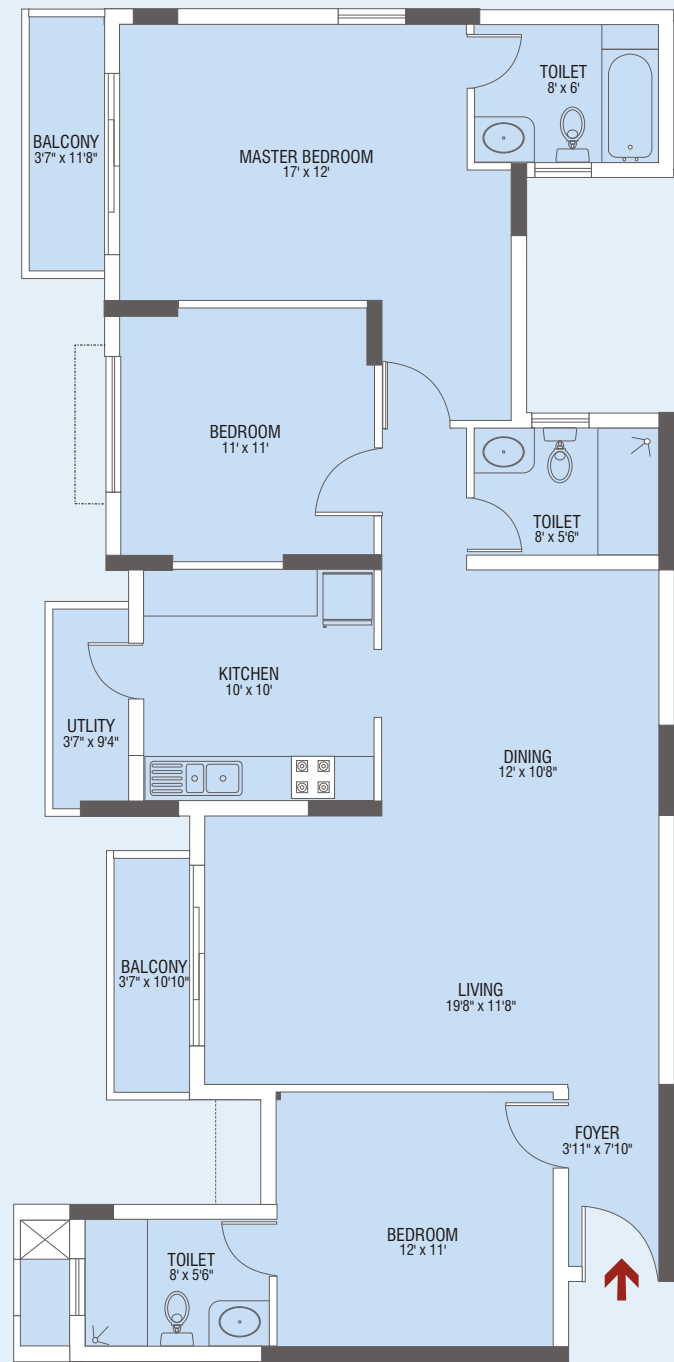
# 3-Bedroom 1640 sft (TYPE C)



LOCATIONS OF THE 3-BEDROOM 1640 SFT (TYPE C) APTS

Wing	Floor	Apts No. in key plan
C	2 <sup>nd</sup> to 15 <sup>th</sup>	6 and 7
H	2 <sup>nd</sup> to 7 <sup>th</sup>	1,2,7,8
	8 <sup>th</sup> to 13 <sup>th</sup>	7 and 8
	14 <sup>th</sup> to 17 <sup>th</sup>	1,2,7,8
I	2 <sup>nd</sup> to 17 <sup>th</sup>	1,2,7,8
	8 <sup>th</sup> to 13 <sup>th</sup>	1 and 2
	14 <sup>th</sup> to 17 <sup>th</sup>	1,2,7,8
K	2 <sup>nd</sup> to 7 <sup>th</sup>	1 and 2
	16 <sup>th</sup> to 18 <sup>th</sup>	7 and 8
L	2 <sup>nd</sup> to 10 <sup>th</sup> , 15, 16	7 and 8
	11 <sup>th</sup> to 14 <sup>th</sup>	1,2,7 and 8
M	2 <sup>nd</sup> to 10 <sup>th</sup> , 15, 16	1,2,7 and 8
	11 <sup>th</sup> to 14 <sup>th</sup>	1 and 2

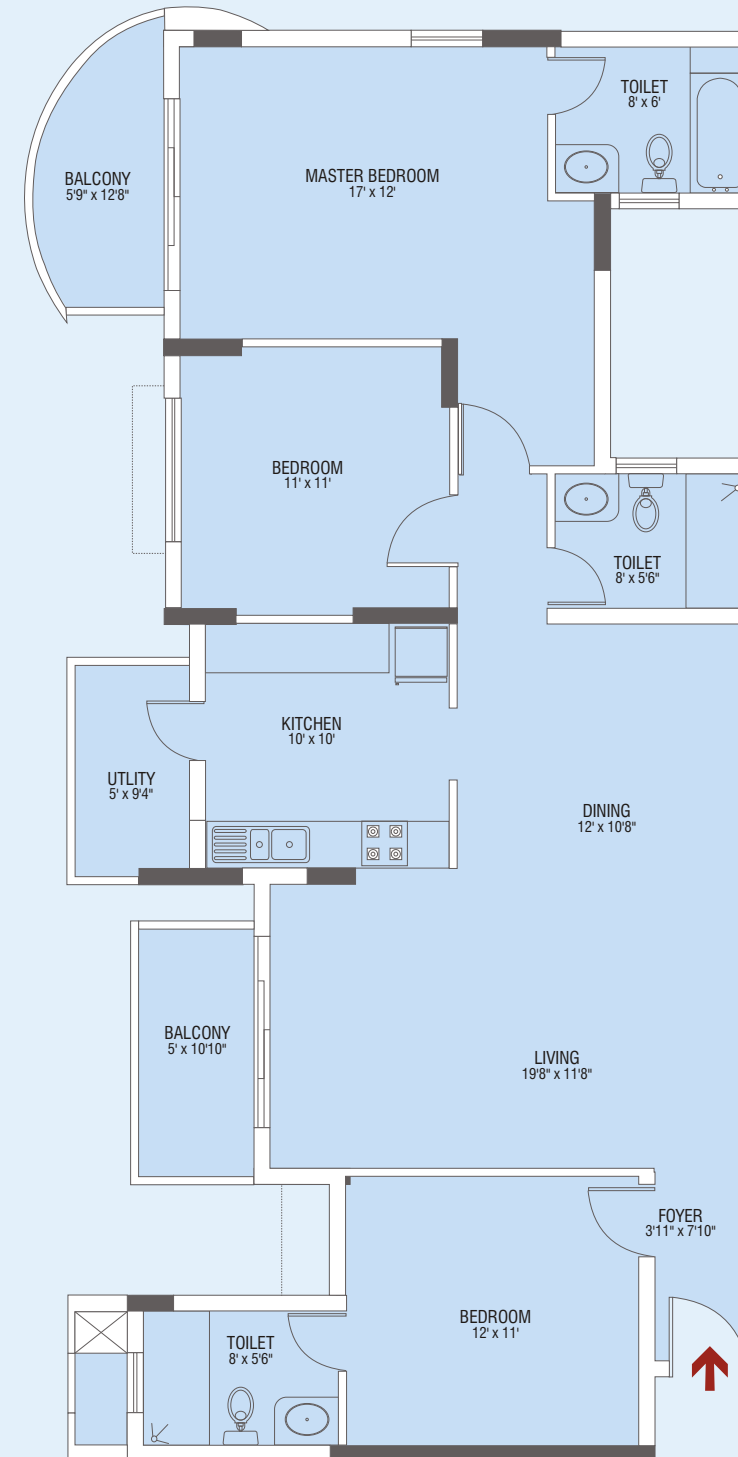
# 3-Bedroom 1670 sft



LOCATIONS OF THE 3-BEDROOM 1670 SFT APTS

Wing	Floor	Apts No. in key plan
C	1 <sup>st</sup>	1,2

# 3-Bedroom 1720 sft



LOCATIONS OF THE 3-BEDROOM 1720 SFT APTS

Wing	Floor	Apts No. in key plan
C	2 <sup>nd</sup> to 16 <sup>th</sup>	1,2

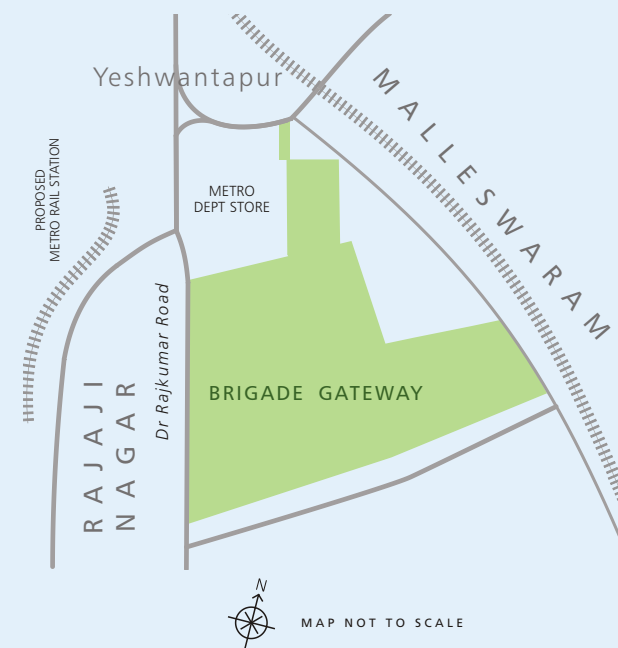
# Features and Facilities

- **Flooring:**
  - Combination of Granite / Vitrified tiles in common areas
  - Vitrified tiles in foyer, living, dining and kitchen
  - Ceramic tiles in bedroom, balcony and utility
- Apartment **main door** in teakwood frame with polished designer shutters
- Black granite **kitchen** counter with stainless steel sink and single drain board
- **Bathrooms** with anti skid ceramic tiles and chromium plated fittings
- **Windows:** PVC / aluminium, three track glazed sliding shutters with mosquito mesh and safety grill
- Long-lasting textured paints for building exteriors
- Acrylic emulsion **paint** for interior walls and OBD for ceilings
- Concealed conduit with copper wiring for electrical fittings throughout the apartment

- **Power supply:**
  - 5 kW (single phase) for 2-bedroom apartments
  - 6 kW (three phase) for 3-bedroom apartments
  - 8 kW (three phase) for 4-bedroom apartments
- **Standby Power:**
  - 1 kW for 2-bedroom apartments
  - 2 kW for 3-bedroom apartments
  - 3 kW for 4-bedroom apartments
- **Back-up generator** for pumps, lifts and common area lighting

- **Passenger lift** with 13-person capacity
- **Service lift** with 1,000 kg capacity
- **Fire protection** system as per Karnataka Fire Force standards

- Integrated Building Monitoring and Security System (IBMS)
- Internet and Cable TV connections on a subscription basis
- **Club:** on a membership fee and a monthly subscription basis only
- Two-level covered **car parking**
- Reticulated **gas supply**
- Landscaped **gardens**
- Garbage chute





*For a better quality of life,  
upgrade to Brigade*

**Corporate HQ:**

Brigade Enterprises Pvt. Ltd, Penthouse, Brigade Towers,  
Brigade Road, Bangalore 560 025, INDIA  
Ph: +91-80-4137 9200 Fax: +91-80-2221 8497

**Brigade Gateway Project Office:**

26/1, Dr Rajkumar Road,  
Malleswaram West, Bangalore 560 055  
Ph: +91-80-4180 8800 gateway@brigadegroup.com

[brigadegroup.com](http://brigadegroup.com)