

2&3

Bedroom Apt Floor Plans

1290 SFT — 1960 SFT

TO HELP YOU SELECT YOUR APARTMENT IN
Phase 2



BRIGADE
METROPOLIS
WHITEFIELD ROAD

Site Plan



For a larger site plan and for more information on the project, please refer to the Brigade Metropolis Poster Brochure.

Key Plan of The Residential Section



Note: Only plans for apartments in Phase 2 are shown in this brochure. Please check with us for Phase 1 apartment plans.

Features and Facilities

- **Flooring:**
 - Ceramic tiles in apartment for living, dining, kitchen, bedrooms, balcony and utility. Upgrade options: wooden flooring in master bedroom and vitrified files in living, dining, kitchen and other bedrooms
 - Granite / vitrified / marble tiles in common areas
 - Apartment **main door** in teakwood frame with polished designer shutters
 - Black granite **kitchen** counter with stainless steel sink and single drain board and single bowl
 - **Bathrooms** with anti skid ceramic tiles and chromium plated fittings
 - **Windows:** P V C / aluminium, three track glazed sliding shutters with mosquito mesh and safety grill
 - Long-lasting textured paints for building exteriors
 - Acrylic emulsion **paint** for interior walls and OBD for ceilings
 - Concealed conduit with copper wiring for electrical fittings throughout the apartment
-
- **Power supply:**
 - 4 kW (single phase) for 2-bedroom apartments
 - 5 kW (single phase) for 3-bedroom apartments
 - **Standby Power:**
 - 1 kW for 2-bedroom apartments
 - 2 kW for 3-bedroom apartments
 - **Back-up generator** for pumps, lifts and common area lighting
-
- **Passenger lifts** with 13-person capacity
 - **Service lift** with 1,000 kg capacity
 - **Fire protection** system as per Karnataka Fire Force standards
-
- Integrated Building Monitoring and Security System (IBMS)
 - Internet and Cable TV connections on a subscription basis
 - **Club:** on a membership fee and a monthly subscription basis only. Facilities includes:
 - Swimming pool
 - Auditorium
 - Health club and gym
 - Lounge
 - Various indoor sports
 - Lawns
-
- Two-level covered **car parking**
 - Reticulated **gas supply**
 - Landscaped **gardens**
 - Garbage chute

Table of Contents

2-Bedroom apt floor plans:

1290 sft 5

3-Bedroom apt floor plans:

1630 sft 6

1840 sft 7

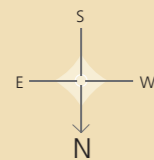
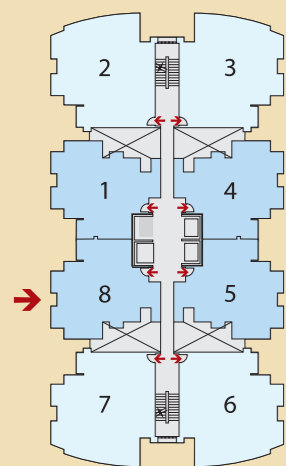
1800 sft (Type A) 8

1800 sft (Type B) 9

1960 sft 10

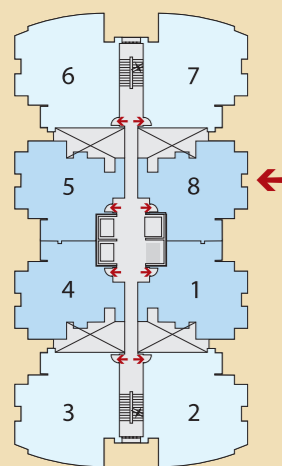
Key plan of

I



Key plan of

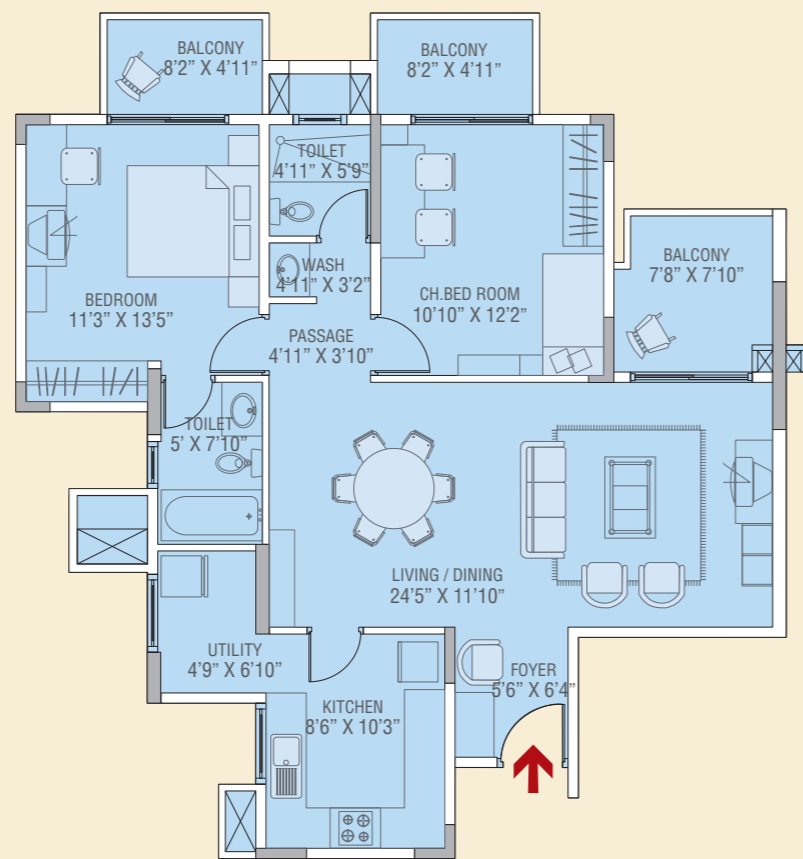
K



I Inverness K Kensington

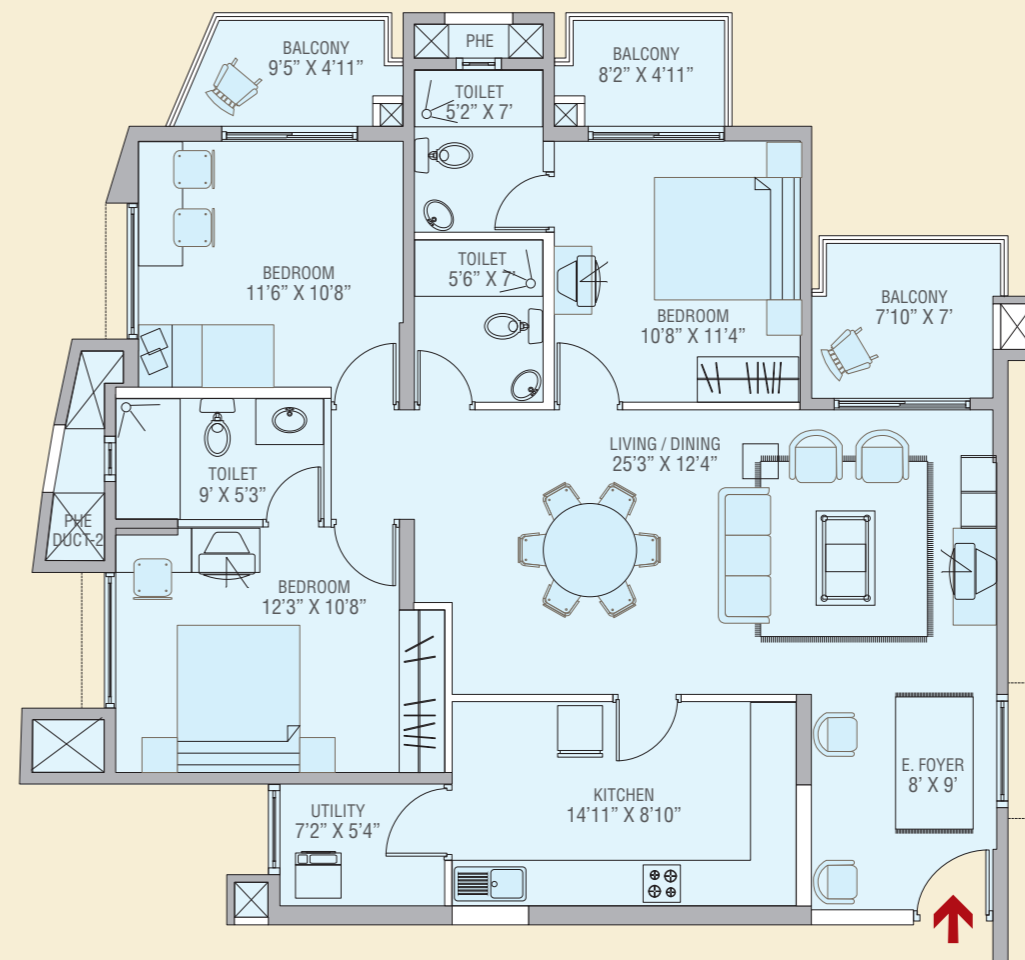
For the orientation of the block and the individual apartments, please refer the key plan of the residential area on page 3

2-BEDROOM 1290 sft



FLOOR PLANS

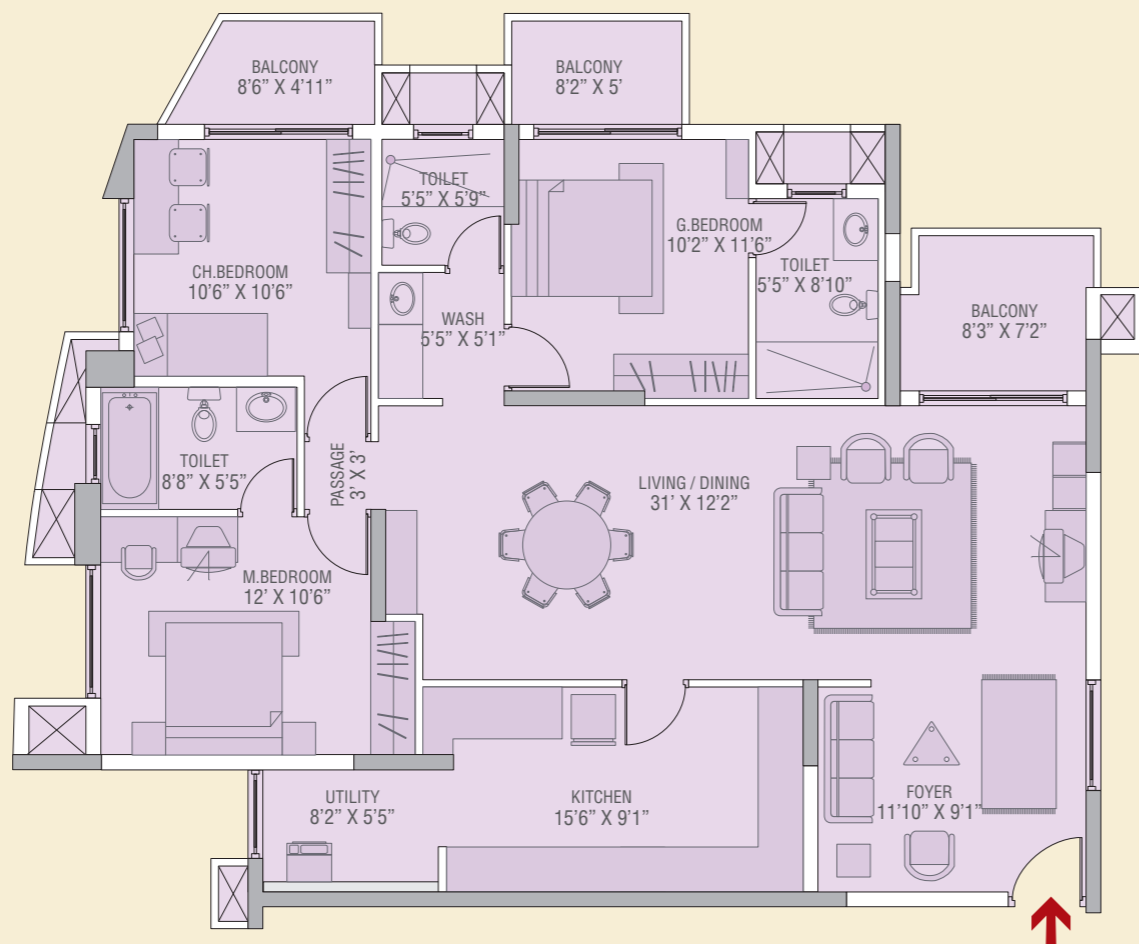
3-BEDROOM 1630 sft



BRIGADE METROPOLIS

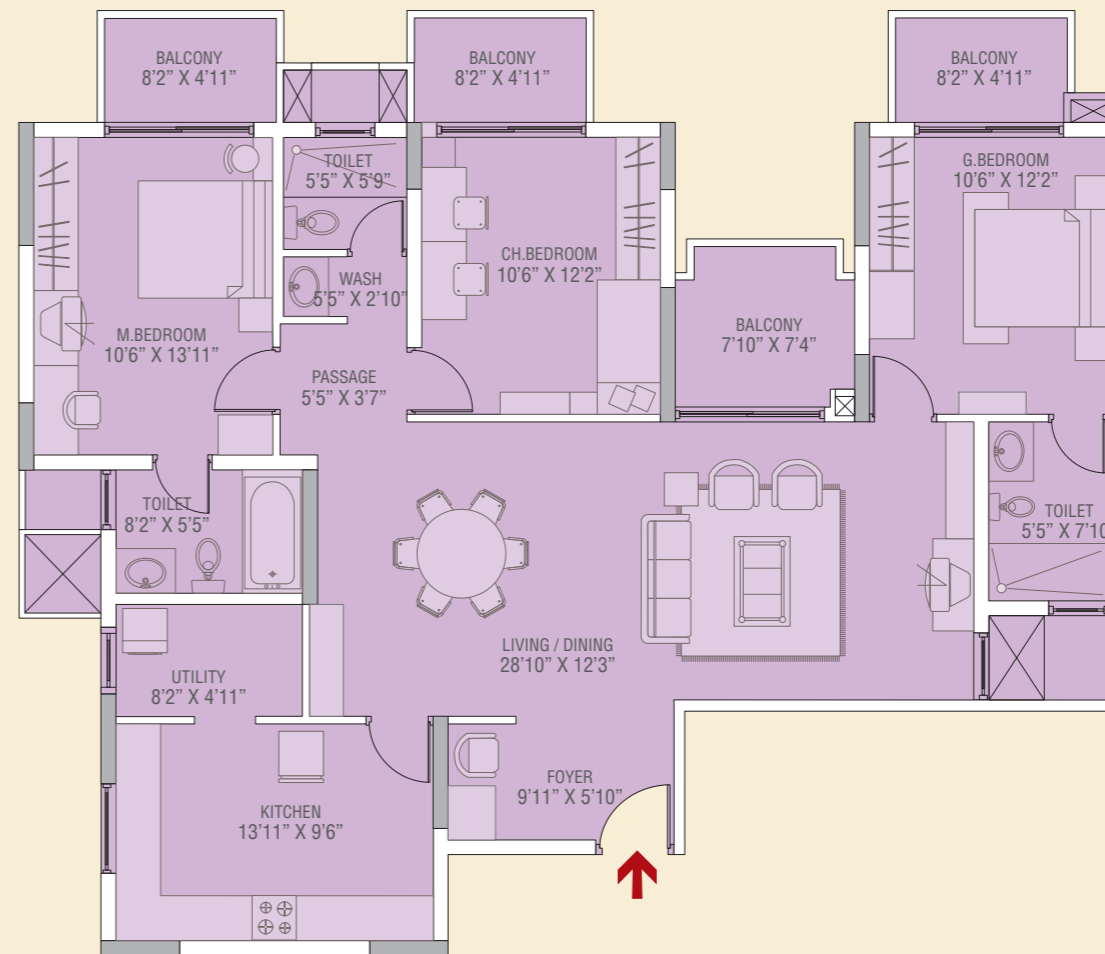
- 2-Bedroom apt
1290 sft
- 3-Bedroom apt
1630 sft
- 1840 sft
- 1800 sft (Type A)
- 1800 sft (Type B)
- 1960 sft

3-BEDROOM 1840 sft



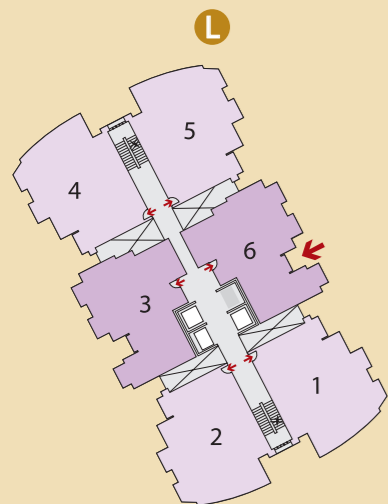
FLOOR PLANS

3-BEDROOM 1800 sft (Type A)



BRIGADE METROPOLIS

Key plan of

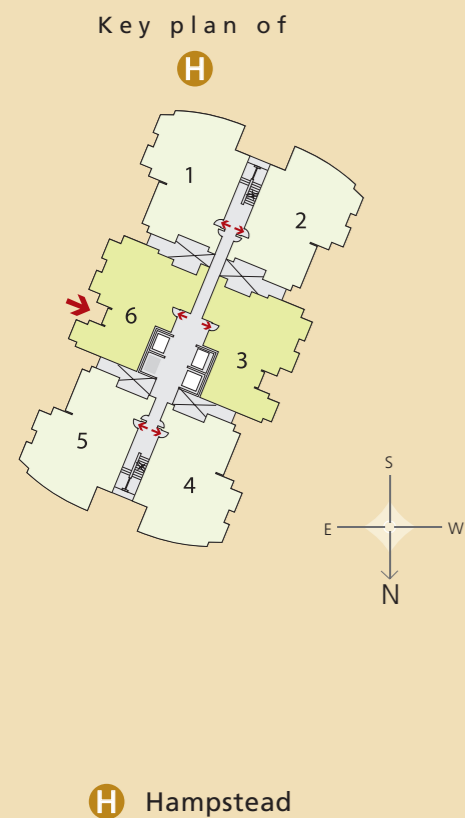


Liverpool

- 2-Bedroom apt
1290 sft
- 3-Bedroom apt
1630 sft
- 1840 sft**
- 1800 sft (Type A)**
- 1800 sft (Type B)
- 1960 sft

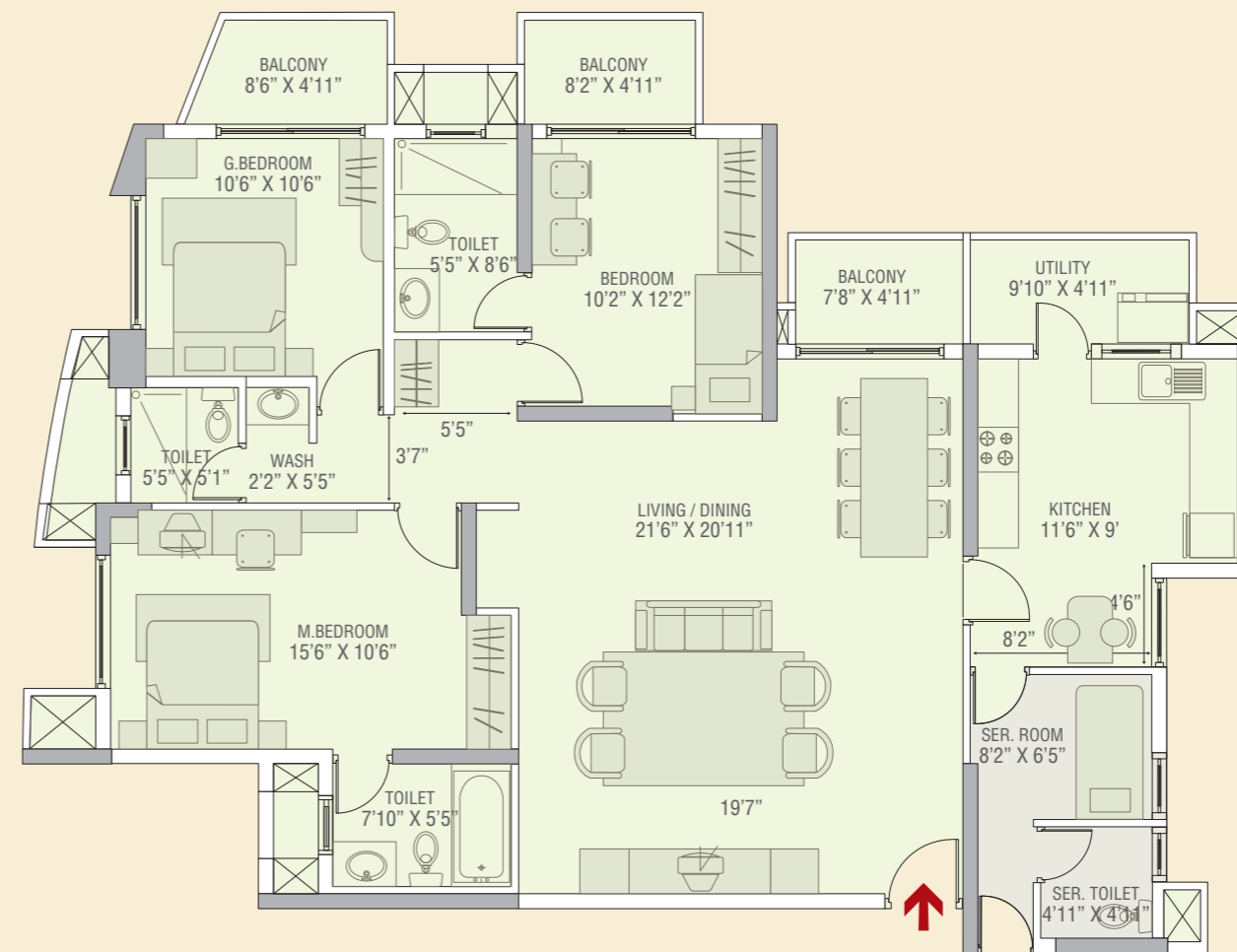
For the orientation of the block and the individual apartments, please refer the key plan of the residential area on page 3

3-BEDROOM 1800 sft (Type B)



FLOOR PLANS

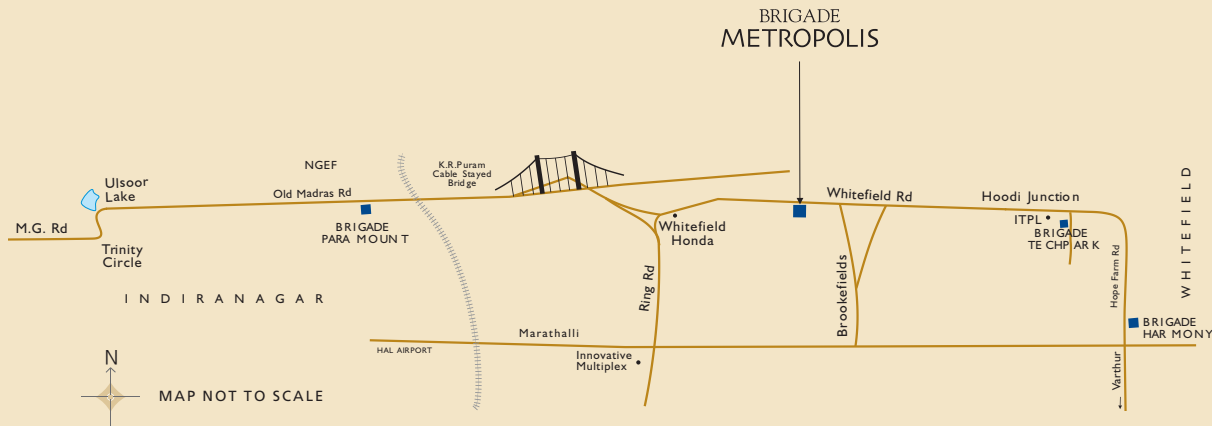
3-BEDROOM 1960 sft



BRIGADE METROPOLIS

- 2-Bedroom apt
1290 sft
- 3-Bedroom apt
1630 sft
- 1840 sft
- 1800 sft (Type A)
- 1800 sft (Type B)**
- 1960 sft**

Location Map



- 10 km from Trinity Circle, M.G. Road
- 4 km before ITPL
- 4 km before Satya Sai Super-speciality Hospital
- 7 km from Satya Sai Baba ashram
- 13 km to HAL Airport
- Easy accessibility to the Outer Ring Road, to Koramangala, Hosur Road and Devanahalli International Airport



*For a better quality of life,
upgrade to Brigade*

Brigade Metropolis Site Office:
73/1 Garudacharpalya, Mahadevapura post
Whitefield Main Road, Bangalore 560 048
Ph: +91-80-40214666
metropolis@brigadegroup.com

Corporate HQ:
Brigade Enterprises Pvt. Ltd, Penthouse, Brigade Towers
Brigade Road, Bangalore 560 025, INDIA
Ph: +91-80-4137 9200 Fax: +91-80-4152 4385
brigadegroup.com