

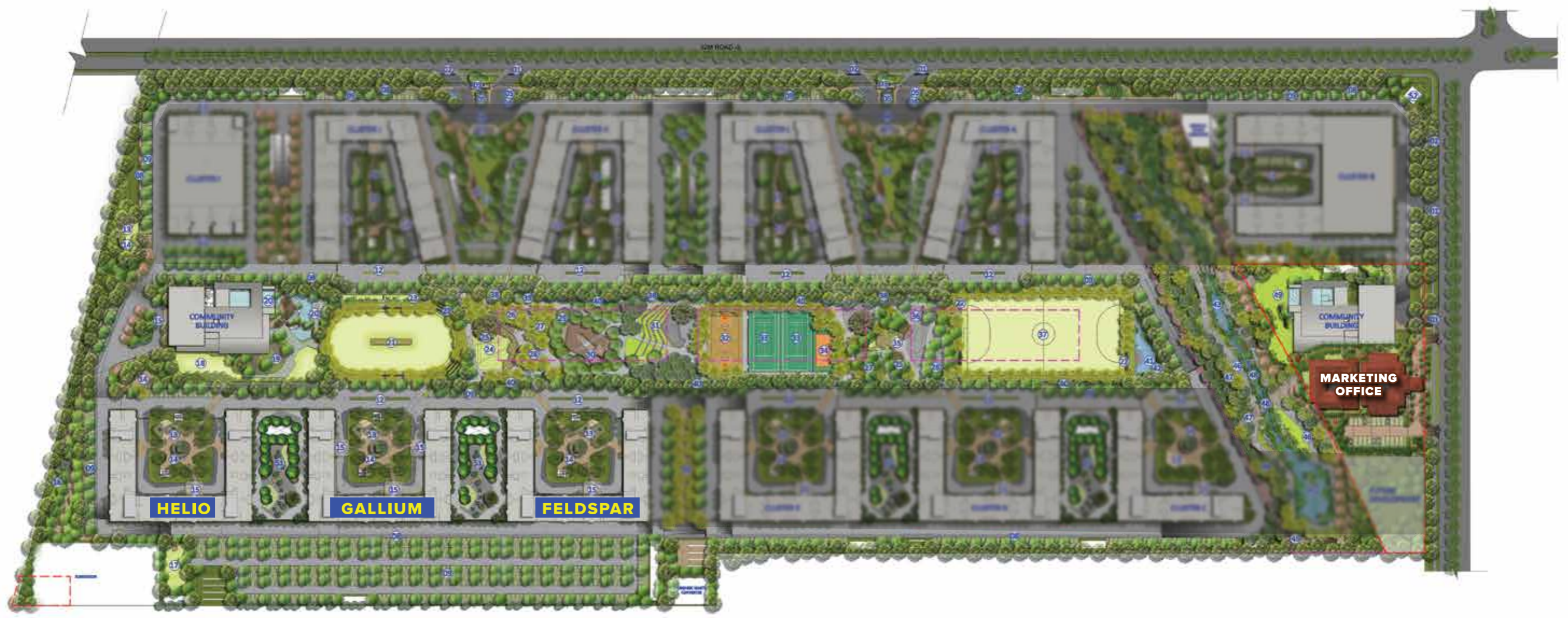
# MASTER PLAN

**BRIGADE**  
**EL DORADO**

**LEGEND**

- |    |                             |    |                                       |
|----|-----------------------------|----|---------------------------------------|
| 01 | ENTRY                       | 27 | PLANTED PLAY AREA                     |
| 02 | EXIT                        | 28 | OUTDOOR GYM                           |
| 03 | GUARD ROOM                  | 29 | COMMUNITY FARMING                     |
| 04 | FEATURE WALL                | 30 | FARM CAFE                             |
| 05 | REFLECTIVE WATER BODY       | 31 | AMPHITHEATER                          |
| 06 | ARRIVAL COURT               | 32 | BASKETBALL COURT                      |
| 07 | WAITING AREA                | 33 | TENNIS COURT                          |
| 08 | PERIPHERAL WALKWAY          | 34 | VOLLEYBALL COURT                      |
| 09 | PARKING                     | 35 | SKATING RINK                          |
| 10 | LAWN WITH SEATING           | 36 | SKATE PARK                            |
| 11 | PATHWAY                     | 37 | FOOTBALL FIELD                        |
| 12 | MEDIAN WITH TOWER SIGNAGE   | 38 | PLANTED BERM                          |
| 13 | TODDLERS PLAY AREA          | 39 | RAMP/STEPS FROM THE NORTHERN CLUSTERS |
| 14 | SEATING COURT               | 40 | BIO SWALE                             |
| 15 | DROP OFF AREA               | 41 | RETENTION POND                        |
| 16 | MIYAWAKI FOREST             | 42 | POND SIDE DECK                        |
| 17 | PET PARK                    | 43 | STORM WATER STREAM                    |
| 18 | CLUB SPILL OUT LAWN         | 44 | BERM WITH BUTTERFLY GARDEN            |
| 19 | MOUND WITH STEPS AND SEATS  | 45 | RAMP IN BERM                          |
| 20 | MULTI-LEVEL POOL            | 46 | MULCH PATHWAY                         |
| 21 | MINI CRICKET FIELD          | 47 | STEPS EMBEDDED IN MOUND               |
| 22 | SPECTATOR SEATING STAND     | 48 | STEPPING STONES                       |
| 23 | PRACTICE CRICKET PITCHES    | 49 | MINI GOLF PUTTING GREEN               |
| 24 | KIDS' PLAY LAWN WITH MOUNDS | 50 | LANDSCAPE SPINE WITH AROMATIC PLANTS  |
| 25 | PLAY PLATFORMS              | 51 | LANDSCAPED TERRACES                   |
| 26 | SAND PIT                    | 52 | CLOCK TOWER                           |

--- PARKS AND OPEN SPACES  
--- CIVIC AMENITIES



The information depicted herein viz., master plans, floor plans, furniture layout, fittings, illustrations, specifications, designs, dimensions, rendered views, colours, amenities and facilities etc., are subject to change without notifications as may be required by the relevant authorities or the developer's architect, and cannot form part of an offer or contract. Whilst every care is taken in providing this information, the Developer cannot be held liable for variations. All illustrations and pictures are artist's impression only. The information are subject to variations, additions, deletions, substitutions and modifications as may be recommended by the company's architect and/or the relevant approving authorities. The Developer is wholly exempt from any liability on account of any claim in this regard. (1 square metre = 10.764 square feet). E & OE.

All dimensions and calculations are done in metric system ( M/ Sq.m), and imperial system (Ft/ Sq.ft) shown is for reference only.

