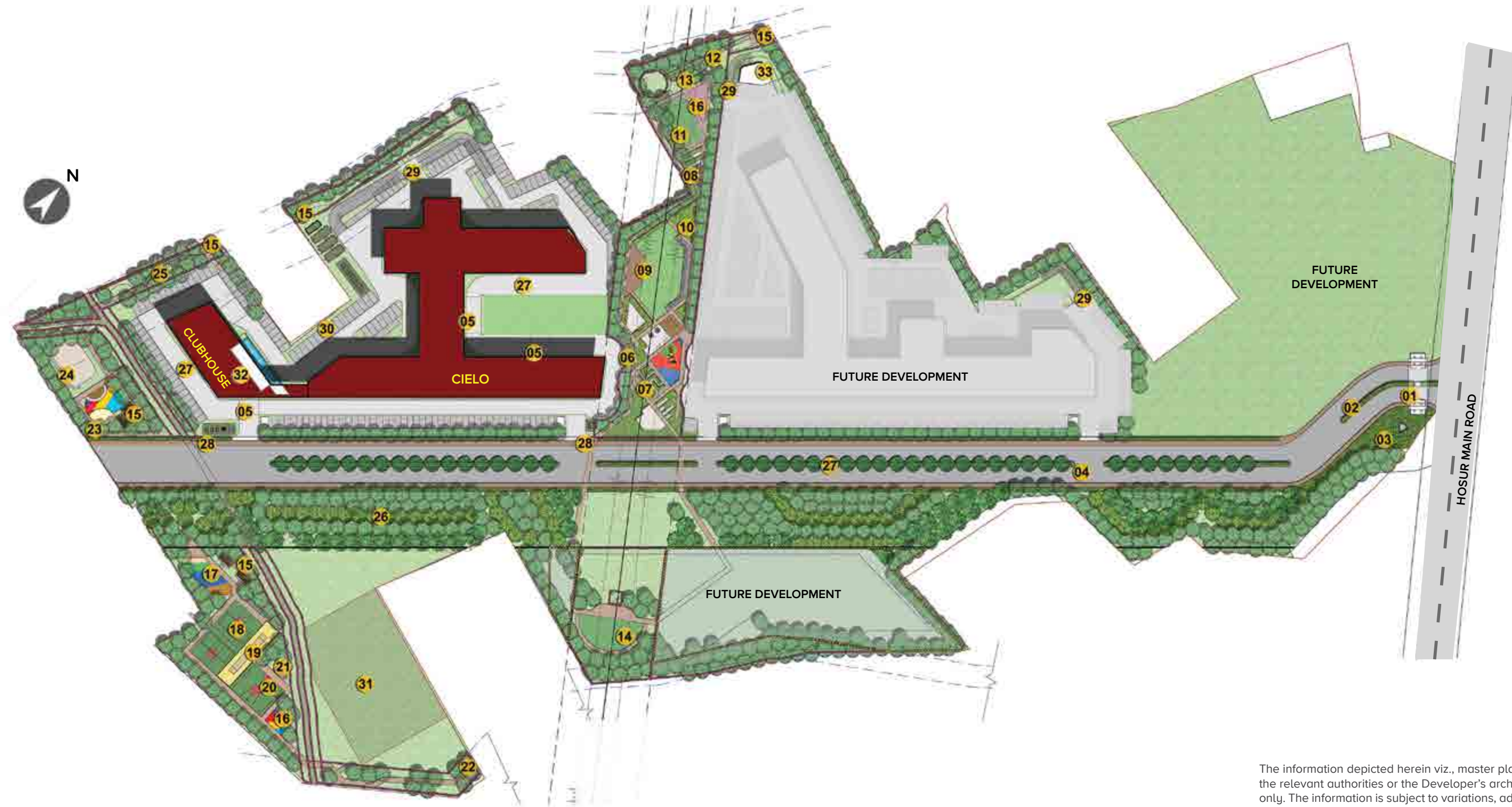


MASTER PLAN



LEGEND

- | | |
|--------------------------------|-----------------------------------|
| 1. Entry & exit | 22. Pet park |
| 2. CDP road | 23. Toddlers' sand pit |
| 3. Clock tower | 24. Skating rink |
| 4. Tree-lined avenue | 25. Aroma garden |
| 5. Building drop off | 26. Temporary tree park |
| 6. Nature trail/Jogging track | 27. Driveway |
| 7. Maze garden | 28. Transformer yards |
| 8. Community garden | 29. Ramps to basement |
| 9. Gathering lawn | 30. Car parking |
| 10. Floral garden | 31. Substation |
| 11. Yoga lawn reflexology path | 32. Club house with swimming pool |
| 12. Buffer planting | 33. OWC park and open space |
| 13. Seating pod | |
| 14. Playfield | |
| 15. Pavilions | |
| 16. Outdoor gym | |
| 17. Children's play area | |
| 18. Multipurpose court | |
| 19. Cricket practice pitch | |
| 20. Dribble court | |
| 21. Stepped seating | |
- Park and open space
- Civic amenities
- ☒ Existing High tension line



The information depicted herein viz., master plans, floor plans, furniture layout, fittings, illustrations, specifications, designs, dimensions, rendered views, colours, amenities and facilities etc., are subject to change without notifications as may be required by the relevant authorities or the Developer's architect, and cannot form part of an offer or contract. Whilst every care is taken in providing this information, the Developer cannot be held liable for variations. All illustrations and pictures are artist's impressions only. The information is subject to variations, additions, deletions, substitutions and modifications as may be recommended by the company's architect and/or the relevant approving authorities. The Developer is wholly exempt from any liability on account of any claim in this regard. (1 square metre = 10.764 square feet). E & OE. All dimensions and calculations are done in metric system (M/Sq.m), and imperial system (Ft/Sq.ft) shown is for reference only. All dimensions indicated in the drawing are from unfinished surfaces, excluding plaster thickness and tile thickness.